

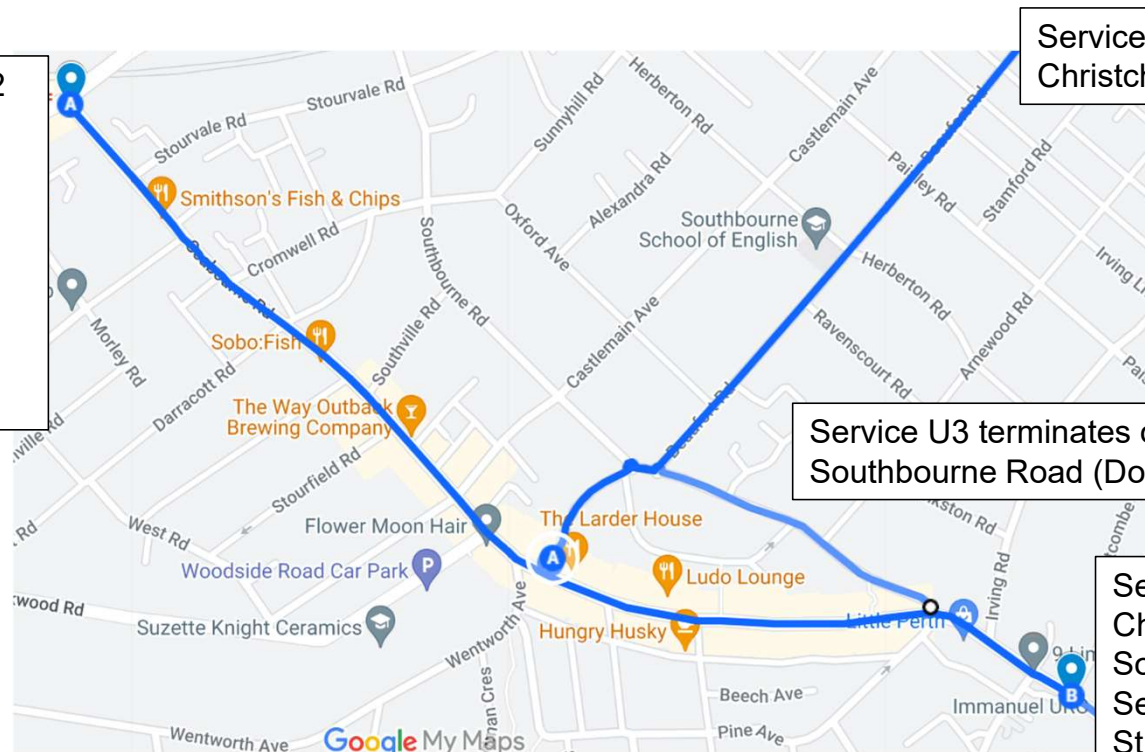
# Bus Service Improvement Plan

Appendix A – Pokesdown & Southbourne Bus Priority  
Summary of Proposed Changes

# Introduction

The project focuses on improving journey times for buses travelling between Pokesdown Station and Southbourne, which use Seabourne Road, Southbourne Grove and Southbourne Road. The corridor is served by 5 bus services (1b, 1c, 33, M2, U3) providing up to 15 buses per hour. In addition, 4 bus services (85, 86, 87, 88) provide transport for students to St Peter's School. This equates to over 93,000 journeys per year.

Services 1b, 1c, 33 and M2 continue to Bournemouth. Service U3 continues to Bournemouth University, Talbot Campus. Services 85, 86, 87 and 88 continue to Corfe Mullen, Springbourne, West Moors and Wimborne.



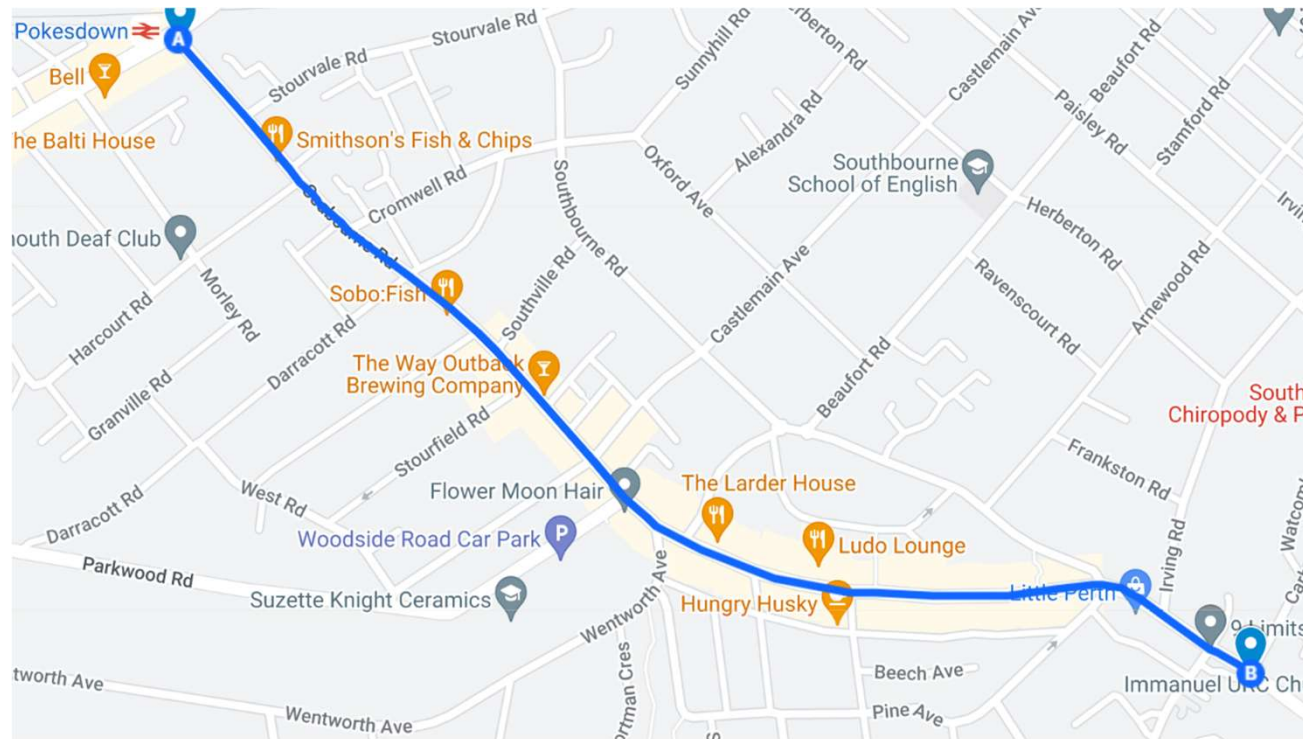
Service 1b continues to Christchurch.

Service U3 terminates on Southbourne Road (Douglas Mews).

Service 1c and 33 continue to Christchurch. Service M2 continues to Southbourne Cross Roads. Service 85, 86, 87 and 88 continue to St Peter's School.

# Introduction

The project seeks to review arrangements to improve traffic flow in both directions of travel between junction of Christchurch/Seabourne Road and junction of Southbourne Road/Carbery Avenue. This corridor was highlighted by bus operators as causing delays to services due to congestion as a result of existing parking arrangements. The length of corridor being reviewed is 1.2km.



# Introduction

The table below provides analysis of service journey times travelling between Stony Lane and Purewell Cross in both directions.  
Source: GOV.UK Analyse Bus Open Data (ABODS).

	FY	Average Journey Time	Lowest Mean Journey Time (by time band)	Highest Mean Journey Time (by time band)	Average Speed	Variance to BSIP Average Speed Targets	
						2025 (13.2mph)	2030 (14.1mph)
Pokesdown Station – Carbery Avenue (Eastbound traffic)	2023/24	4 mins 9 secs	3 mins 5 secs (6am – 7am) Shortest journey 1 min 33 secs	4 mins 39 secs (3pm – 4pm) Longest journey 15 mins 19 secs	11mph	-2.2mph	-3.1mph
	2024/25	4 mins 47 secs	3 mins 3 secs (6am – 7am) Shortest journey 1 min 27 secs	4 mins 47 secs (3pm – 4pm) Longest journey 22 mins 15 secs	11mph	-2.2mph	-3.1mph
Carbery Avenue – Pokesdown Station (Westbound traffic)	2023/24	5 mins 19 secs	4 mins 1 sec (12am – 1am) Shortest journey 1 min 50 secs	6 mins 0 sec (8am – 9am) Longest journey 12 mins 31 secs	9mph	-4.2mph	-5.1mph
	2024/25	5 mins 47 secs	4 mins 27 sec (11pm – 12am) Shortest journey 1 min 46 secs	6 mins 28 secs (3pm – 4pm) Longest journey 16 mins 54 secs	8mph	-5.2mph	-6.1mph

# Project Overview

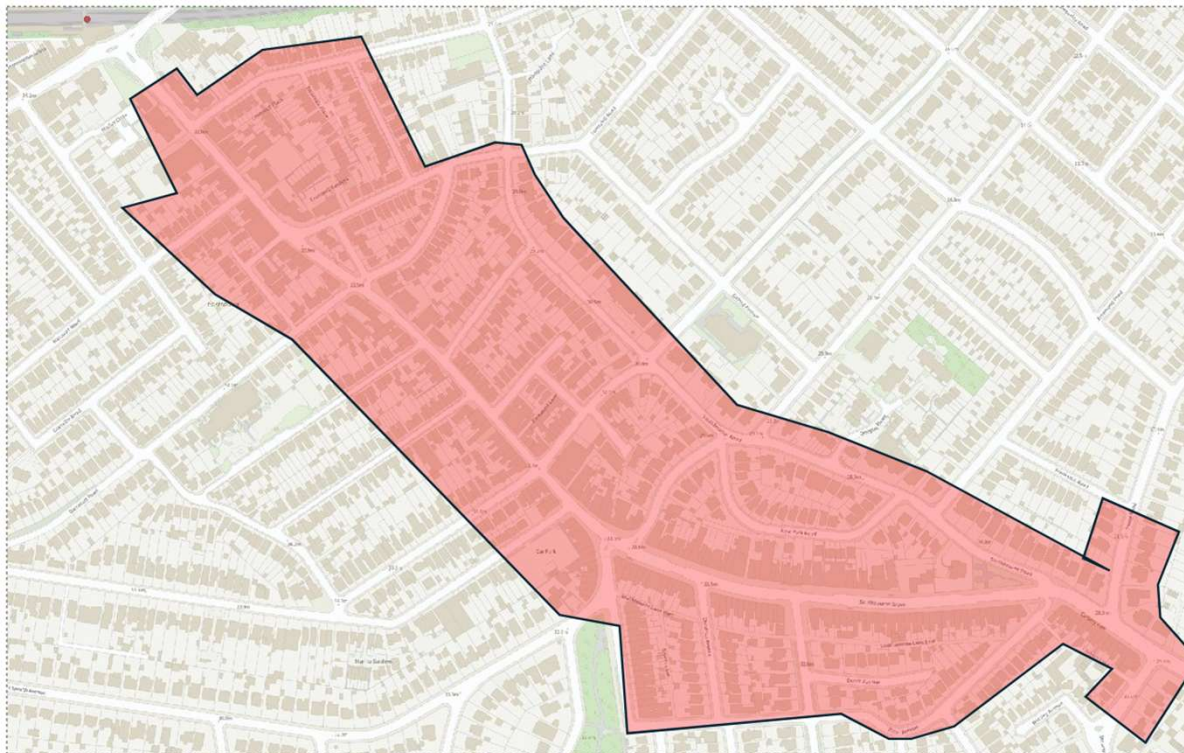


# Local Engagement

- **8 July 2024**  
Initial plans shared with impacted Ward Members with invitation to site visit on 12 July 2024.
- **12 July 2024**  
Site visit undertaken to observe issues faced with existing configuration and discuss plans.
- **13 August 2024**  
Follow up invitation for further comments on existing plans sent to impacted Ward Members including invitation to additional site visit on 20 September 2024.
- **4 October 2024**  
Amended recommendations following site visit sent to impacted Ward Members for further comments.
- **29 November 2024**  
Approach to consultation proposed to impacted Ward Members. Consulted to be delivered through statutory Traffic Regulation Consultation process with enhanced promotion through localised leafleting to promote the consultation.
- **10 January 2025**  
Consultation goes LIVE. Local homes and businesses leafleted, and statutory consultation signage installed.
- **31 January 2025**  
Consultation closes.

# Local Engagement

Residents and businesses in vicinity of scheme area contacted through leaflet distribution. A total of 2000 leaflets issued.



## Have your say Bus Service Improvement Plan consultation

### Pokesdown and Southbourne

BCP Council is consulting with residents and businesses for their views on proposals to help improve the flow of traffic for all road users (including buses) travelling between Pokesdown and Southbourne.

For more information on the proposals, the Bus Service Improvement Plan and how to take part, please visit



[haveyoursay.bcpccouncil.gov.uk/hub-page/highway-consultations](https://haveyoursay.bcpccouncil.gov.uk/hub-page/highway-consultations)  
The consultation will run from 10 January 2025 and closes at 11:59pm **Friday 31 January 2025**



The proposals will aim to:

- Reduce congestion
- Reduce bus journey times and improve reliability of services
- Improve vehicle speeds for all road users
- Improve passenger waiting facilities
- Improve visibility at junctions

### Why are we making these improvements?

These improvements form part of the council's Bus Service Improvement Plan (BSIP); a joint plan between the council and local bus operators to help deliver the government's 'National Bus Strategy'.

Following the 'Bus Back Better' consultation held in November 2021, the section of bus network linking **Pokesdown and Southbourne** was highlighted as an area experiencing congestion, delaying all road users including those reliant on bus services.

### Where are we considering improvements?

The extent of the scheme covers Seabourne Road (junction with Stourvale Road), Southbourne Grove and Southbourne Road (junction with Stourwood Avenue) as shown on this map.



### Why are your views important?

As residents and businesses impacted by the proposals, your feedback will help us finalise proposals and continue onto implementation stage.

# Local Engagement

**A Total of 196 respondents to TRO notice. A general synopsis following assessment of these as follows:**

- **59 responded to support**
  - Prioritises public transport – increases efficiency and encourages use
  - Improves public safety/visibility
  - Reduces congestion and helps traffic flow, need to stop traffic bottlenecks
- **110 responded to object**
  - Loss of parking opportunity for residents in sides roads where there is already competition for space from residents, parents at school times, shoppers, workers.
  - Increased traffic on the side roads
  - Negative impact on businesses on Seabourne Road
  - Perception that disruption to bus services is minimal
  - Needs of local business/residents outweigh the need to reduce bus journey times
- **27 submitted General Comment**

## **Suggestions:**

- Increase parking enforcement to address poor parking non-compliance with parking restrictions
- Encourage use of car parks with free parking for short period – to compensate for removal of any on-street parking and further support traders
- Increase disabled bay provision.

# Section 1

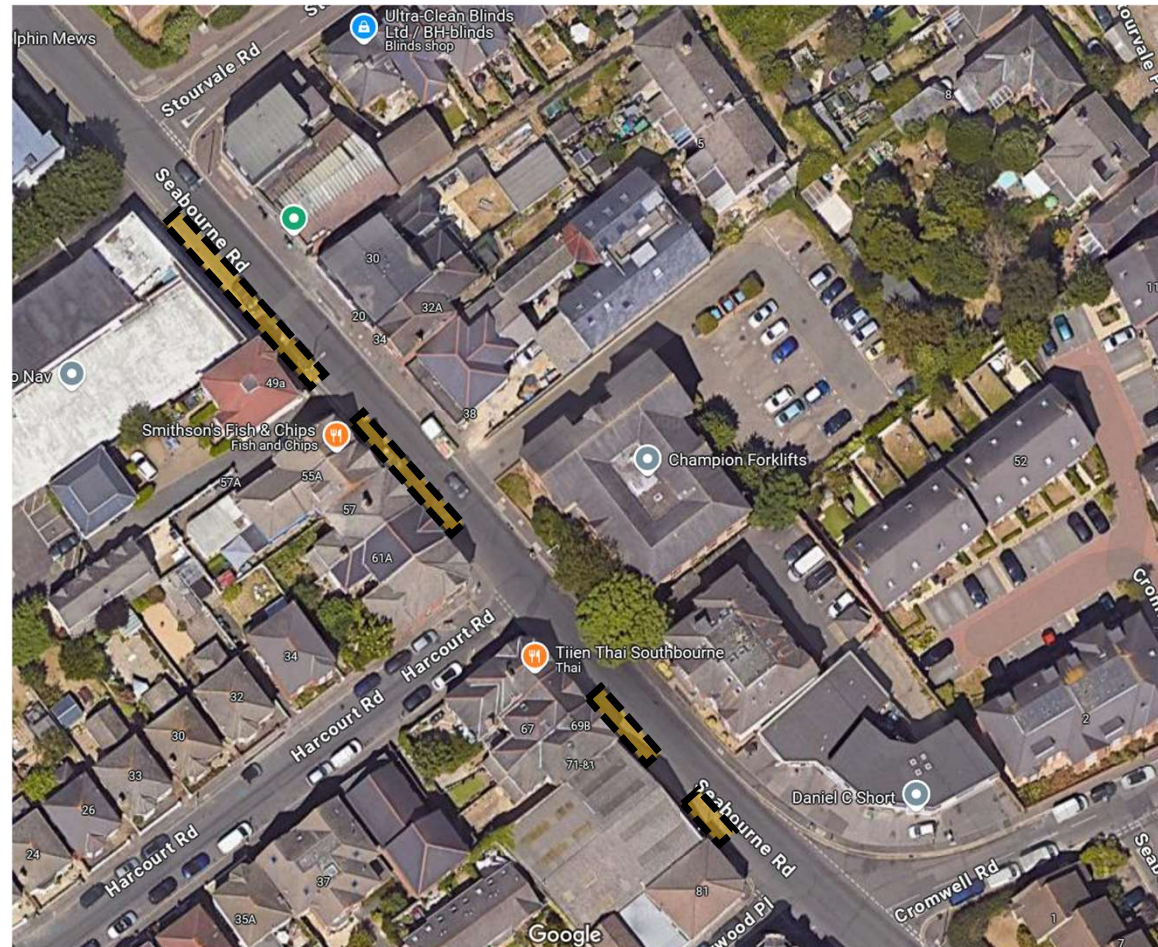
Seabourne Road (Christchurch Road to Darracott Road)

# Section 1: Overview

Review on-street parking arrangements between Stourvale Road and Cromwell Road.

Review of arrangements near Harcourt Road. Illegal parking near junction causes visibility issues for cars joining Seabourne Road.

Review of existing Loading Bay provision near Cromwell Road where a number of local businesses operate.



# 41 to 51 Seabourne Road

## Current layout

32m section of parking (approx. 5 vehicles).  
Length of existing parking arrangement causes congestion, as limited road width does not allow two-way vehicle movement.

Time limited parking restriction on 32m bay:  
Mon – Fri, 8am – 6pm,  
1 hour/no return within 1 hour.

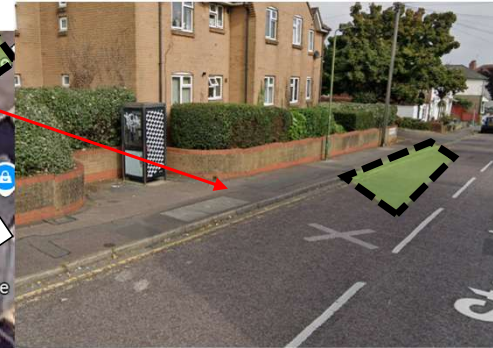
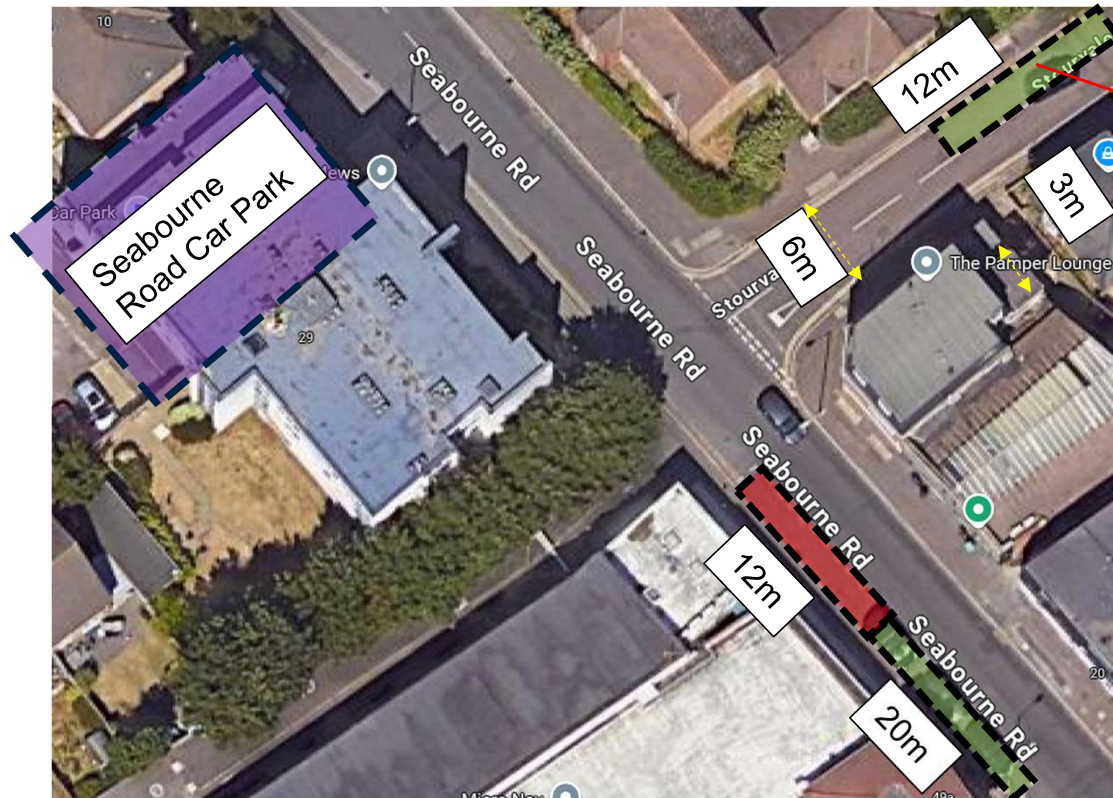
Nearby Seabourne Road Car Park, with 16 bays + 6 for private use.  
Car park survey suggest underutilisation throughout day.

Date	Location Capacity (16 bays)	11:00 spare bay count	15:00 spare bay count	19:00 spare bay count
1/29/2024	Seabourne Road CP (total of 16 bays)	14	13	8
1/30/2024	Seabourne Road CP (total of 16 bays)	11	11	6
1/31/2024	Seabourne Road CP (total of 16 bays)	12	12	9
2/1/2024	Seabourne Road CP (total of 16 bays)	13	11	7
2/2/2024	Seabourne Road CP (total of 16 bays)	13	9	6
2/3/2024	Seabourne Road CP (total of 16 bays)	12	12	7



# 41 to 51 Seabourne Road

## Initial recommendation



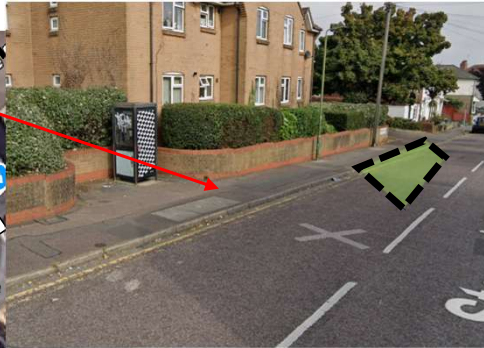
32m parking section reduced by 12m (approx. 2 vehicles). Replace with 'No Waiting At Any Time' restriction. Remaining 20m parking section retained with no alterations to existing timed parking restrictions.

New 12m (approx. 2 vehicles) section of time restricted parking on Stourvale Road. Timed restriction: Mon – Fri, 8am – 6pm, 1 hour/no return in 2 hours.

Provide improved signage to promote Seabourne Road Public Car Park.

# 41 to 51 Seabourne Road

## Adjusted recommendation



32m parking section reduced by 12m (approx. 2 vehicles). Replace with 'No Waiting At Any Time' restriction. Remaining 20m parking section retained with no alterations to existing timed parking restrictions.

New 11m (approx. 2 vehicles) section of time restricted parking on Stourvale Road. Timed restriction: Mon – Fri, 8am – 6pm, 1 hour/no return in 2 hours.

Provide improved signage to promote Seabourne Road Public Car Park.

# 55 to 63 Seabourne Road

## Current layout



21m section of parking (approx. 3 cars). Parking Restriction  
Mon – Fri 8am to 6pm  
1 hour/no return within 1 hour.

‘No Waiting At Any Time’ restriction at junction of Harcourt Road regularly abused. This removes 30m passing place for vehicles and reduces visibility for vehicles exiting from Harcourt Road.

Chevron signs/bollards on Harcourt Road leave vacant unusable road space.

# 55 to 63 Seabourne Road

## Initial recommendation

21m section of parking removed, replace with No Waiting At Any Time parking restriction, No Loading At Any Time restriction at the junction of Harcourt Road.

Remove existing chevron signs/bollards on Harcourt Road to provide 2 x 12m sections of time restricted parking (Mon-Fri 8am-6pm 1 hour/no return in 2 hour) and provision of Motorcycle parking.



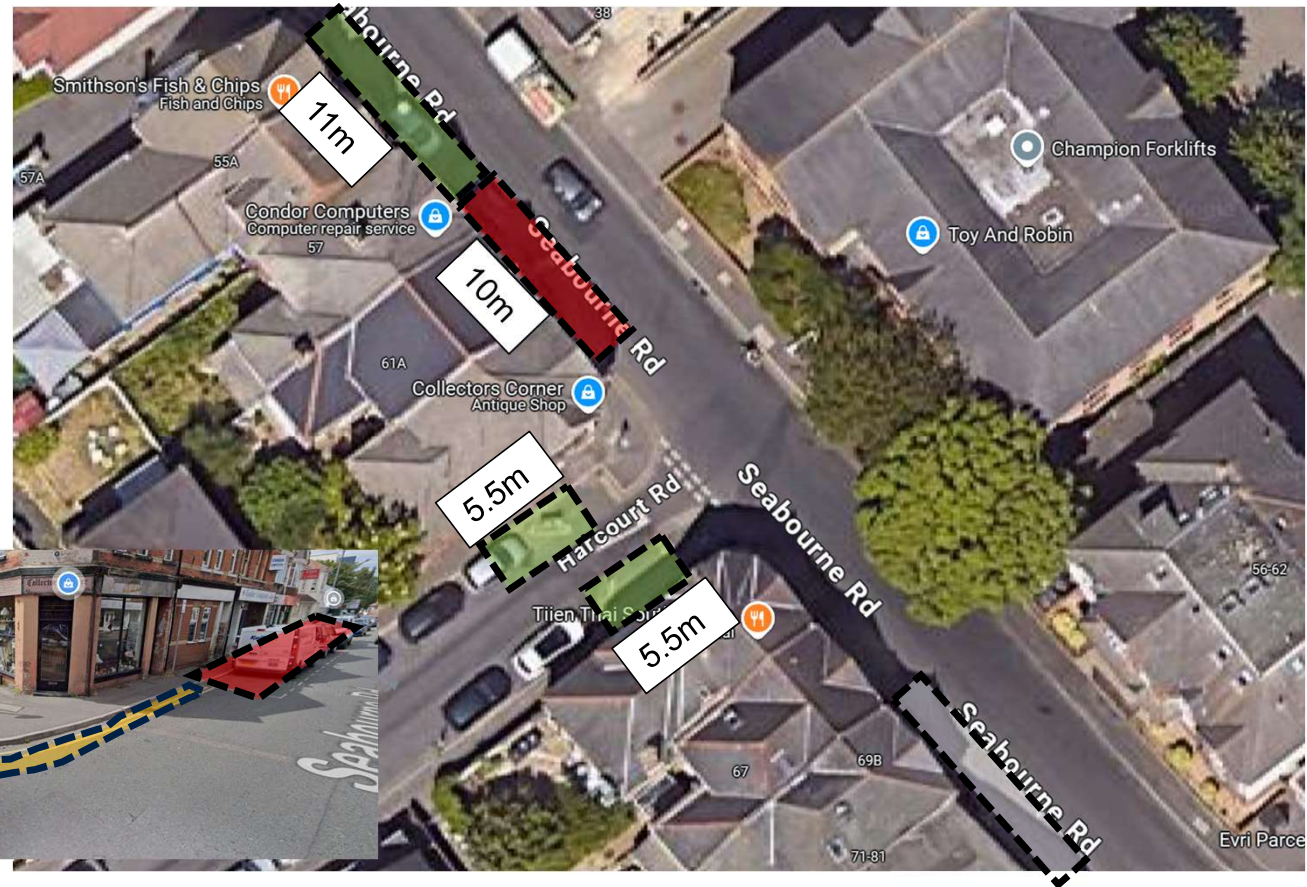
# 55 to 63 Seabourne Road

## Adjusted recommendation

21m section of parking reduced in length by 10m from the southern end, replaced with No Waiting At Any Time parking restriction. Remaining 11m section retained with time restricted parking conditions unchanged.

Existing 'No Waiting At Any Time' restriction around junction of Harcourt Road upgraded to include 'No Loading At Any Time' as per initial recommendation.

Remove existing chevron signs/bollards on Harcourt Road to provide 2 x 5.5m sections of time restricted parking (Mon-Fri 8am-6pm 1 hour/no return in 2 hour) and provision of Motorcycle parking.



9.5m (up to 2 vehicles) parking section  
Parking restriction: Mon – Fri 8am – 6pm  
1 hour/no return within 1 hour.

5m (1 vehicle) Loading Only bay with 24-hour operation. Recent site visit established loading bay is in use by adjacent businesses throughout the day.

# 65 to 79 Seabourne Road

## Initial recommendation

Remove existing 9.5m parking bay. Replace with No Waiting At Any Time parking restriction.

Existing 5m Loading Bay retained and extended to 11m to improve loading provision for local businesses.

Existing limited No Waiting restriction on junction of Seabourne Road / Norwood Place upgraded to No Waiting & No Loading At Any Time to clear junction.

New 12m (up to 2 vehicles) section of time restricted parking on Norwood Place.

New 18m (up to 3 vehicles) section of time restricted parking on Cromwell Road.

Time restricted parking sections:

Mon - Fri 8am - 6pm, 1 hour / No return within 2 hours.



# 65 to 79 Seabourne Road

## Adjusted recommendation

Remove existing 9.5m parking bay. Replace with No Waiting At Any Time parking restriction.

Existing 5m Loading Bay retained and extended to 11m to improve loading provision for local businesses.

Existing limited No Waiting restriction on junction of Seabourne Road / Norwood Place upgraded to No Waiting & No Loading At Any Time to clear junction.

New 18m (up to 3 vehicles) section of time restricted parking on Cromwell Road. Time restricted parking: Mon – Fri, 8am - 6pm, 1 hour / No return within 2 hours.

Initial recommendation of New 12m (up to 2 vehicles) section of time restricted parking on Norwood Place now removed.



# 83 to 111 Seabourne Road

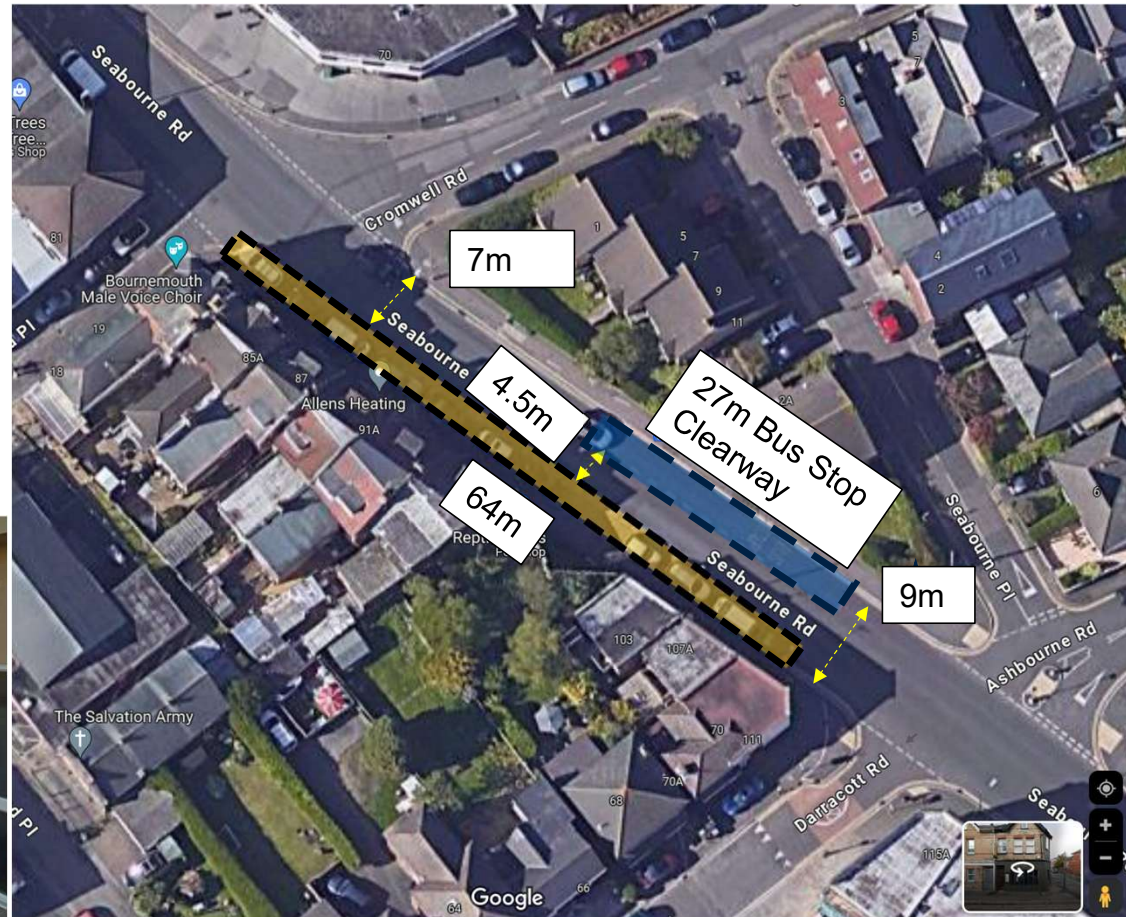
## Current layout

Section of parking approx. 64m with space for up to 12 vehicles.

## Parking Restriction

Mon – Fri 8am to 6pm

1 hour / no return within 1 hour



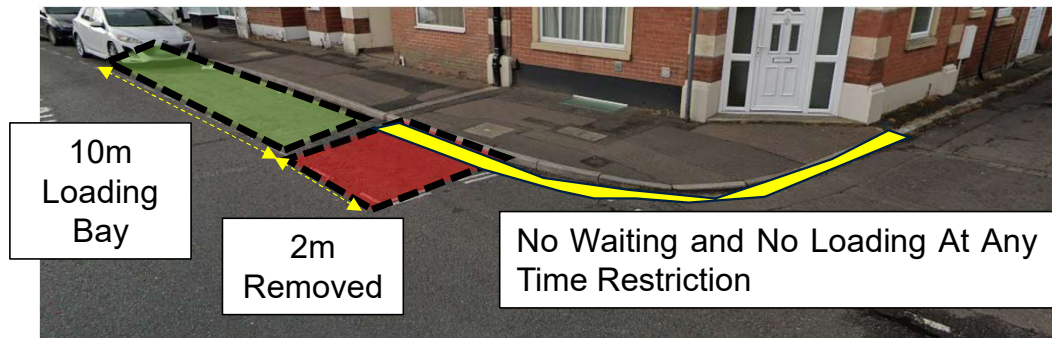
# 83 to 111 Seabourne Road

## Initial recommendation

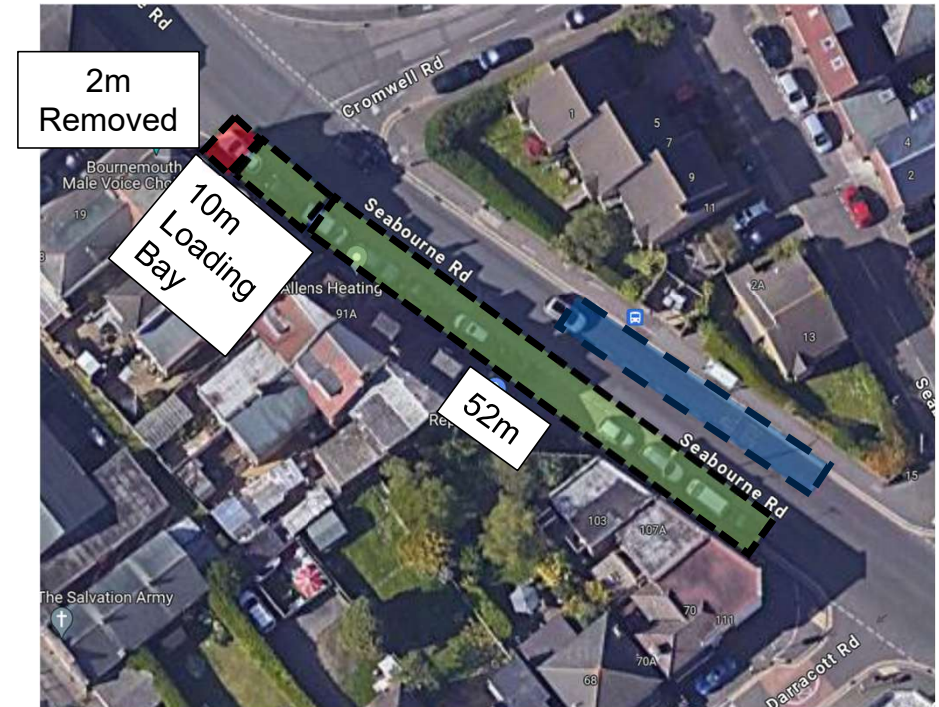
Reduce 64m parking section by 2m. Replace with 'No Waiting and No Loading At Any Time' restriction extended around the junction of Norwood Place, with the aim of improving visibility of the junction and preventing obstruction of the crossing point for pedestrians.

10m of the remaining parking section to be allocated into Loading Bay.

Remaining 52m parking section retained with parking restrictions unchanged.



**No further amendments to the initial recommendation are proposed**



# Section 2

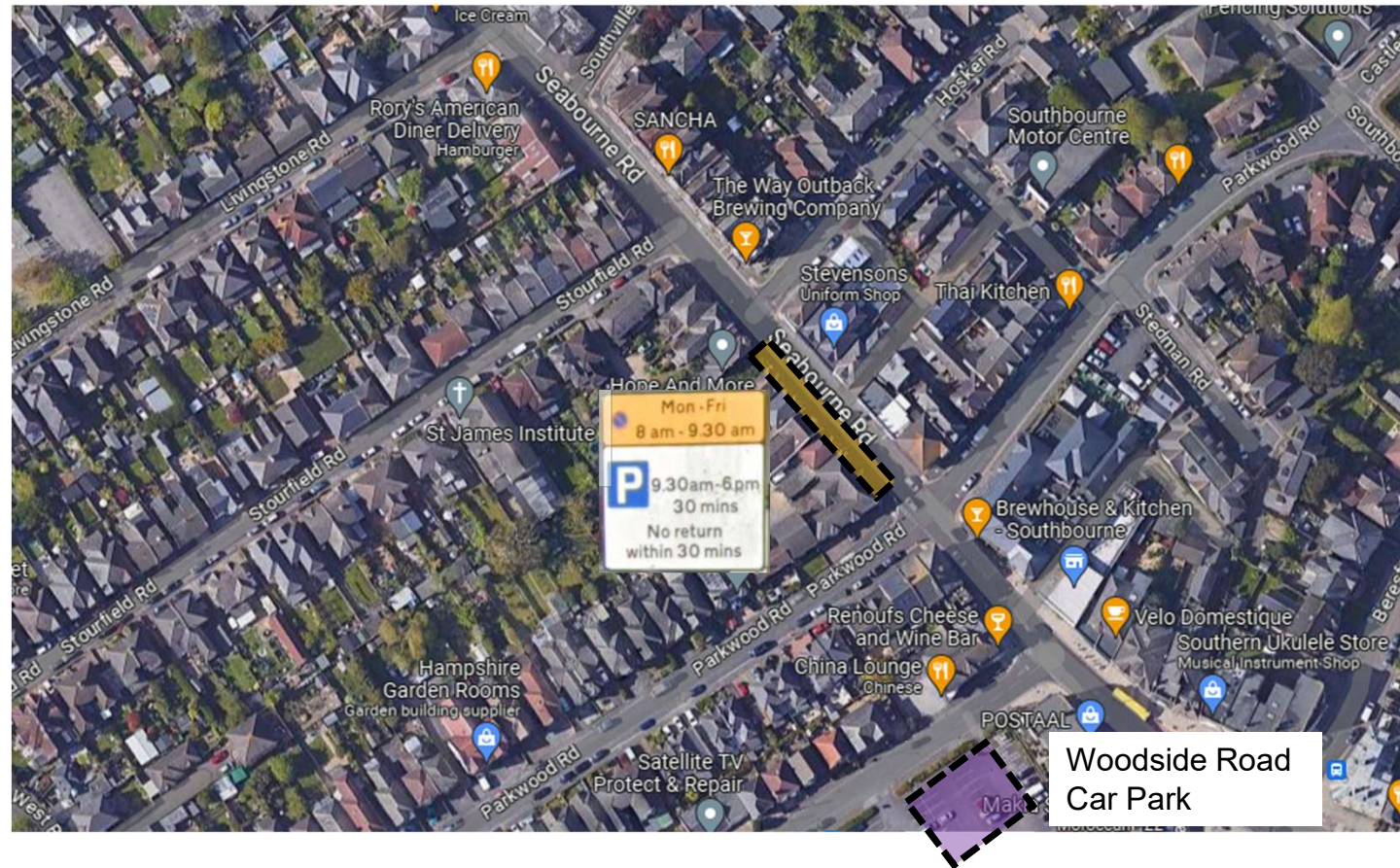
Seabourne Road (Darracott Road to Wentworth Avenue)

## Section 2: Overview

Review on-street parking arrangements. Section prevalent to causing congestion, with combination of on-street parking, nearby junctions and crossing points.

Congestion most prevalent during AM and PM school commute times. Morning restriction observed to be regularly abused.

Nearby Woodside Road Car Park (less than 100m) holds 85 spaces. Car Park data suggest underutilisation.



## Section 2: Overview

Woodside Road Car Park (85 spaces) less than 100m from On-street parking on Seabourne Road.

Parking survey identifies underutilisation of car park in daytime. Also spaces available in evening.

Poor signage advertising car park. No obvious signage beyond Woodside Road and at junction with Seabourne Road.

Date	Location	11:00 spare bay count	15:00 spare bay count	19:00 spare bay count
11/05/2024	Woodside Road CP (total 85 bays)	42	51	56
12/05/2024	Woodside Road CP (total 85 bays)	48	54	54
13/05/2024	Woodside Road CP (total 85 bays)	33	25	45
14/05/2024	Woodside Road CP (total 85 bays)	29	35	48
15/05/2024	Woodside Road CP (total 85 bays)	36	41	44
16/05/2024	Woodside Road CP (total 85 bays)	46	52	54



# 175 to 182 Seabourne Road

## Current layout

44m (up to 8 vehicles) parking section.

Parking restriction:

No Waiting, Mon – Fri 8am - 09:30am.

Timed parking restriction, 9:30am – 6pm

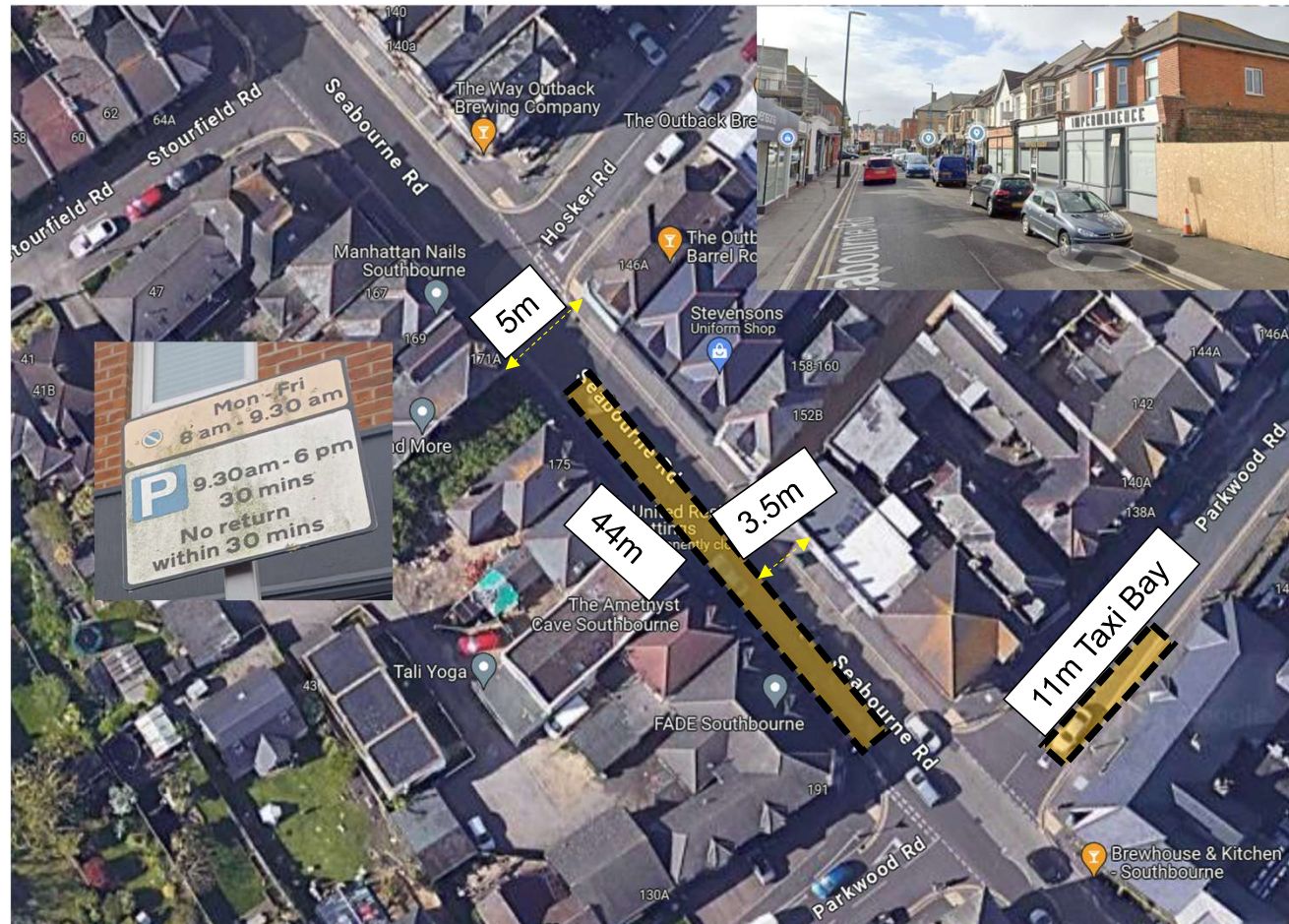
30 mins / no return within 30 mins.

Narrowest point of Seabourne Road with road width 5m where no on-street parking present.

Unrestricted Parking on nearby Hosker Road and Parkwood Road.

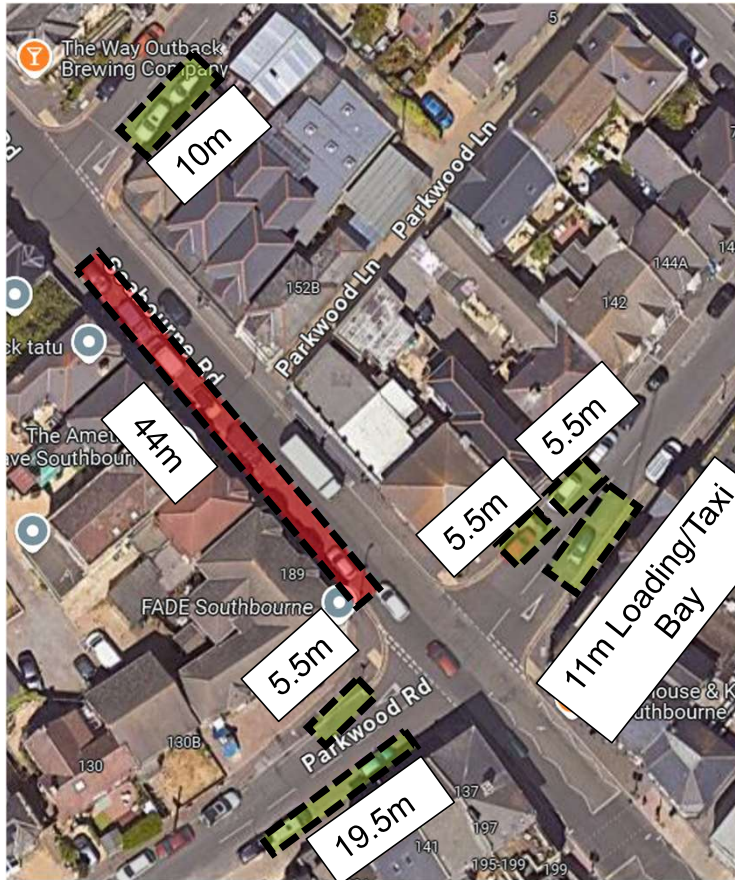
Woodside Road public Car Park 85m away, (2 min walk).

24-hour Taxi bay on Parkwood Road often used by local businesses for loading activity.



# 175 to 182 Seabourne Road

## Initial recommendation



Remove existing 44m parking section. Replace with 'No Waiting At Any Time' Parking Restriction.

Addition of time restricted parking sections on adjacent roads. Restriction for all sections: Mon – Fri, 8am – 6pm, 1 hour / No return in 2 hours. Parking sections as follows:

- Hosker Road – 1 x 10m (up to 2 vehicles).
- Parkwood Road
  - 3 x 5.5m (1 vehicle)
  - 1 x 11m (up to 2 vehicles)
  - 1 x 19.5m (up to 4 vehicles)
- Woodside Road – 1 x 18m (up to 3 vehicles)

Amendment to existing Taxi bay on Parkwood Road:

Loading Only, 8am – 6pm, No Waiting Except Taxis, 6pm – 8am.



Provide additional signage to promote Woodside Road Car Park

Additional 4 bays + loading bay provided through reconfiguration

# 175 to 182 Seabourne Road

## Initial recommendation (continued)

- Hosker Road – 10m time restricted parking (up to 2 vehicles)



- Parkwood Road – 2 x 5.5m time restricted parking (up to 2 vehicles) parallel with existing Taxi Bay
- Taxi Bay to become shared use – Daytime Loading/Evening Taxi



- Parkwood Road – 19.5m + 5.5m time restricted parking (up to 4 vehicles)

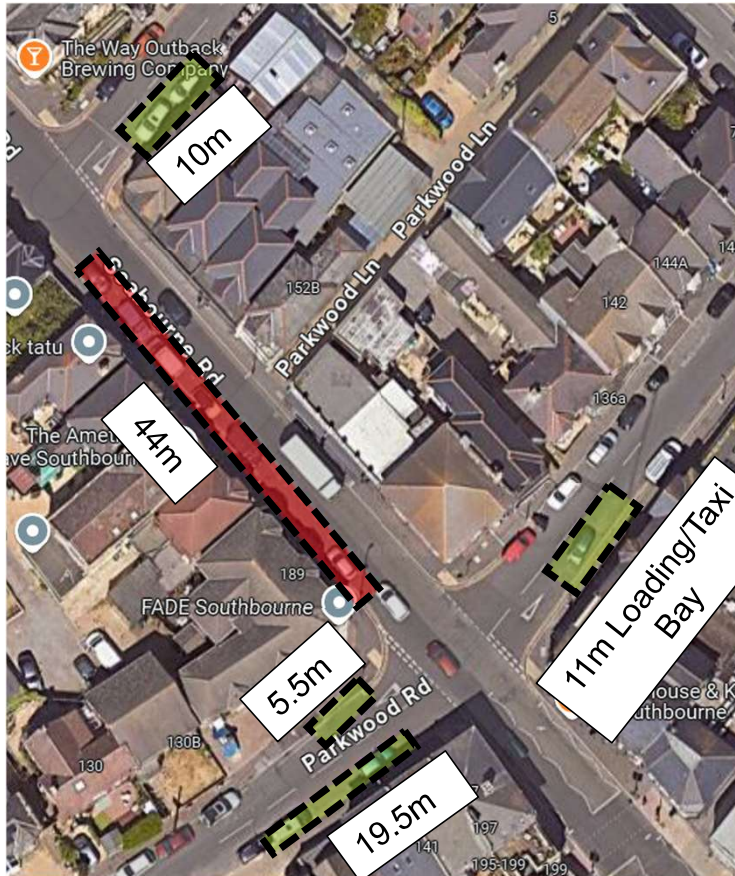


- Woodside Road – 18m time restricted parking (up to 3 vehicles)



# 175 to 182 Seabourne Road

## Adjusted recommendation



Remove existing 44m parking section. Replace with 'No Waiting At Any Time' Parking Restriction.

Addition of time restricted parking sections on adjacent roads. Restriction for all sections: Mon – Fri, 8am – 6pm, 1 hour / No return in 2 hours. Parking sections as follows:

- Hosker Road – 1 x 10m (up to 2 vehicles)
- Parkwood Road
  - 1 x 5.5m (1 vehicle)
  - 1 x 19.5m (up to 4 vehicles)
- Woodside Road – 1 x 18m (up to 3 vehicles).

Amendment to existing Taxi bay on Parkwood Road:

Loading Only, 8am – 6pm, No Waiting except Taxi, 6pm – 8am.



Provide additional signage to promote Woodside Road Car Park

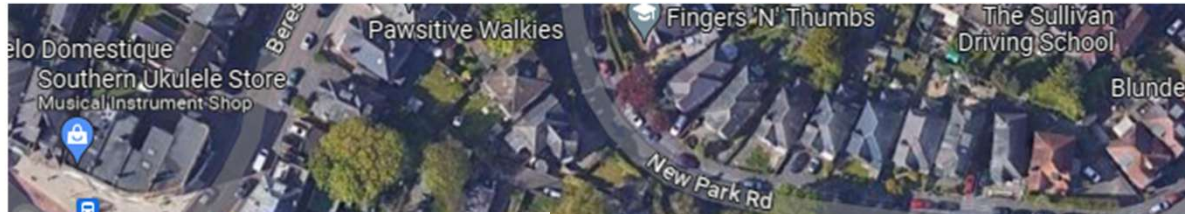
Additional 3 bays + loading bay provided through reconfiguration

2 x 5.5m parking sections on Parkwood Road now removed.

# Section 3

Southbourne Grove (Wentworth Avenue to Southbourne Road)

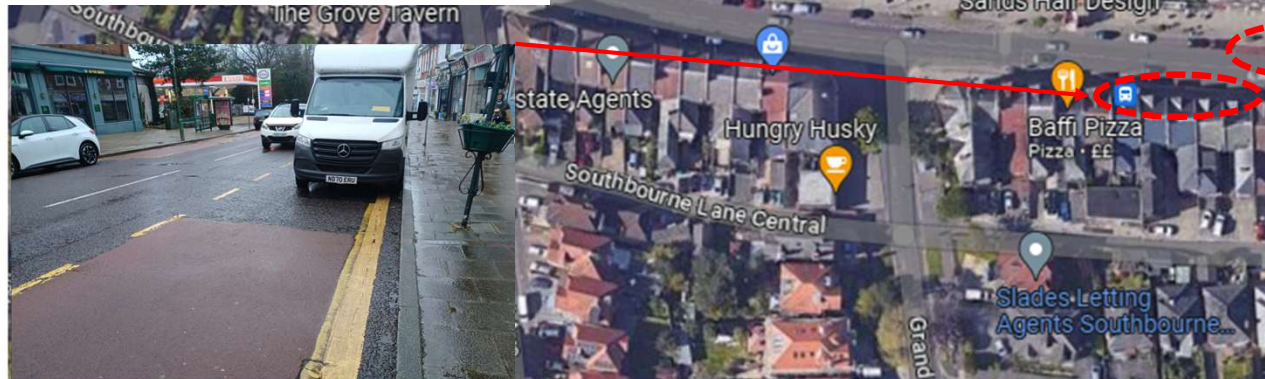
## Section 3: Overview



Buses unable to serve stop correctly due to 1 vehicle bay. Removal of 1 vehicle parking bay at front of stop allowing extension of clearway to 24m (**Complete:** TRO notice P44).



Bus stop clearway abused. Inconsistent bus stop configuration with missing section of red tarmac at rear of stop. Extension of red tarmac marking to incorporate length of clearway (**Underway**).



Consider a review of end parking bay to aid right turning buses from Southbourne Rd onto Southbourne Grove.

# 111 to 117 Southbourne Grove

## Current layout

30m (up to 6 vehicles) Parking layby  
Parking Restriction, 9am to 6pm 1 hour / no return within 1 hour.

Existing configuration allows vehicles with overhang to park over pavement, causing difficulty for longer buses turning right form Southbourne Road (Services 1b/U3).



# 111 to 117 Southbourne Grove

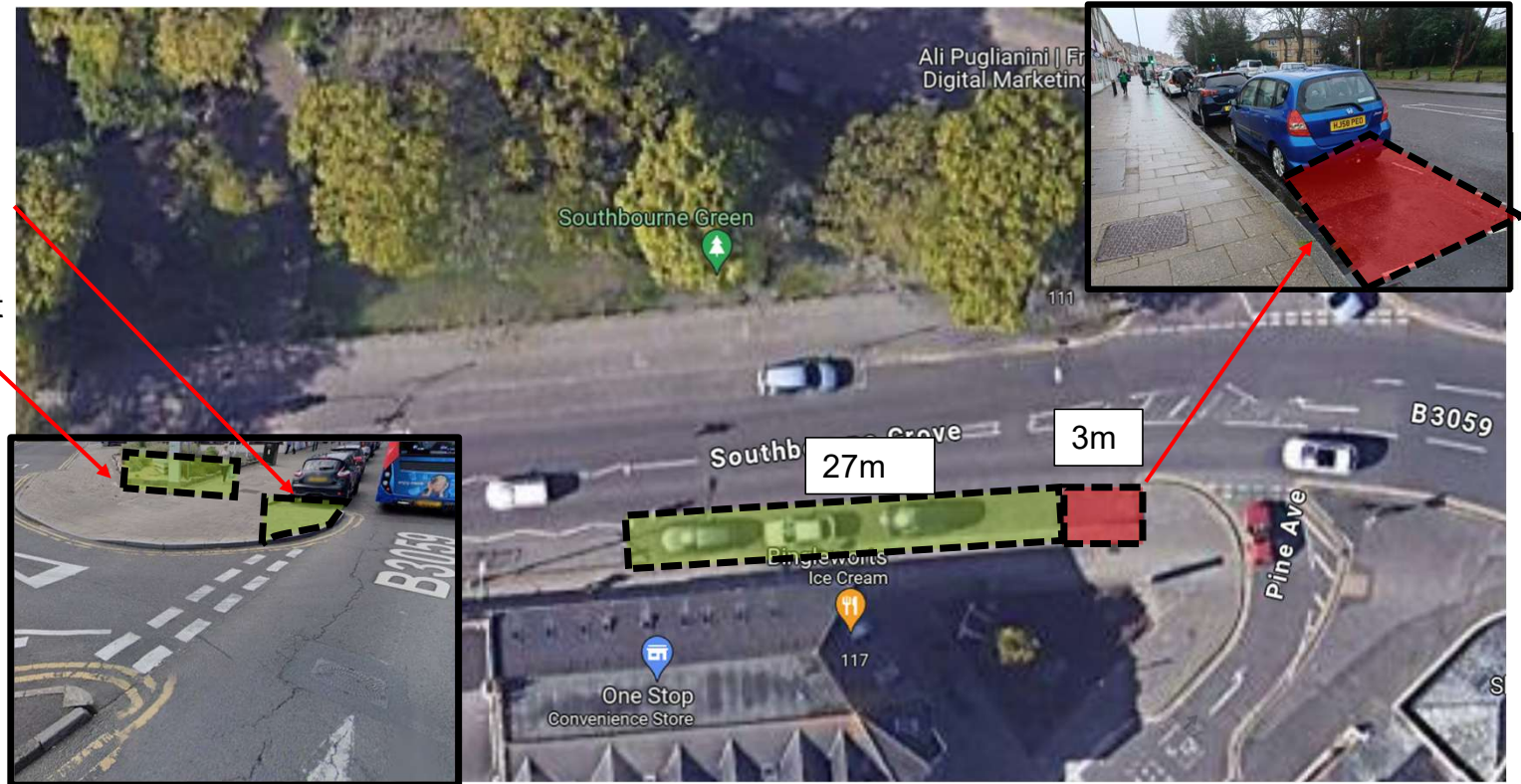
## Initial recommendation

30m Parking section reduced by 4m at Pine Avenue end.

Installation of Rediweld kerbs and/or wands in newly created space to prevent vehicle use.

Provide public realm improvements at junction of Pine Avenue.

Provide additional highway signage for Woodside Road Car Park.



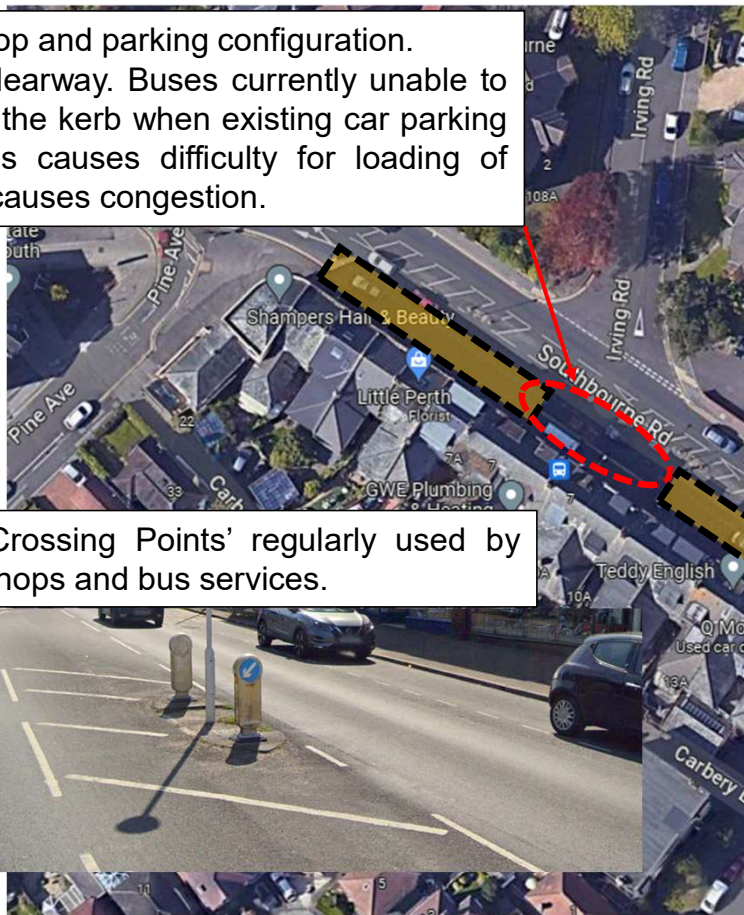
No further amendments to the initial recommendation are proposed

# Section 4

Southbourne Road (Pine Avenue to Stourwood Avenue)

## Section 4: Overview

Review existing bus stop and parking configuration. Insufficient length of clearway. Buses currently unable to park in alignment with the kerb when existing car parking bays are utilised. This causes difficulty for loading of wheelchair users and causes congestion.



Two sub standard 'Crossing Points' regularly used by residents accessing shops and bus services.



# Carbery Row, Southbourne Road

## Current layout

Parking bay(A) for up to 6 vehicles.  
Parking bay(B) for up to 4 vehicles.  
Parking bay(C) for 1 vehicle.

Parking Restriction across all Bays:  
Cars and Motorcycles Only  
8am – 6pm  
2 hours / No return within 1 hour.

Bus cage 19m. Insufficient length to serve effectively. Recommended length 27m.

6.6m Disabled parking bay on Irving Road.



# Carbery Row, Southbourne Road

## Initial recommendation

Configuration of parking section amended as follows:

- Parking bay (A), reduced to 29m (reduction of 1 vehicle).
- Parking bay (B) reduce to 15m, (reduction of 1 vehicle).
- Extend bus stop clearway to 27m. Provide accessible boarding kerb ahead of shelter. Investigate feasibility for replacement shelter in improved position.
- Parking bay (C), retain existing arrangement

Existing time restrictions unchanged.

Raise crossing point concerns with Road Safety team for thoughts and options.

Consider removal of disabled parking bay on Irving Road, replace with 11m parking bay.



# Carbery Row, Southbourne Road

## Adjusted recommendation

Configuration of parking section amended as follows:

- Parking bay (A), reduced to 29m (reduction of 1 vehicle).
- Parking bay (B) reduce to 15m, (reduction of 1 vehicle).
- Extend bus stop clearway to 27m. Provide accessible boarding kerb ahead of shelter. Investigate feasibility for replacement shelter in improved position.
- Parking bay (C), retain existing arrangement

Existing time restrictions unchanged.

Raise crossing point concerns with Road Safety team for thoughts and options.

Disabled parking bay on Irving Road retained.



# Summary of Recommendations

Section	Description	Initial recommendation	Adjusted recommendation
1	<b>41 to 51 Seabourne Road</b>	<p>32m parking section reduced by 12m (approx. 2 vehicles). Replace with 'No Waiting At Any Time' restriction. Remaining 20m parking section retained with no alterations to existing timed parking restrictions.</p> <p>New 12m (approx. 2 vehicles) section of time restricted parking on Stourvale Road. Timed restriction: Mon – Fri, 8am – 6pm, 1 hour/no return in 2 hours.</p> <p>Provide improved signage to promote Seabourne Road Public Car Park.</p>	<p>32m parking section reduced by 12m (approx. 2 vehicles). Replace with 'No Waiting At Any Time' restriction. Remaining 20m parking section retained with no alterations to existing timed parking restrictions.</p> <p>New 11m (approx. 2 vehicles) section of time restricted parking on Stourvale Road. Timed restriction: Mon – Fri, 8am – 6pm, 1 hour/no return in 2 hours.</p> <p>Provide improved signage to promote Seabourne Road Public Car Park.</p>
1	<b>55 to 63 Seabourne Road</b>	<p>21m section of parking removed, replace with No Waiting At Any Time parking restriction, No Loading At Any Time restriction at the junction of Harcourt Road.</p> <p>Remove existing chevron signs/bollards on Harcourt Road to provide 2 x 12m sections of time restricted parking (Mon-Fri 8am-6pm 1 hour/no return in 2 hour) and provision of Motorcycle parking</p>	<p>21m section of parking reduced in length by 10m from the southern end, replaced with No Waiting At Any Time parking restriction. Remaining 11m section retained with time restricted parking conditions unchanged.</p> <p>Existing 'No Waiting At Any Time' restriction around junction of Harcourt Road upgraded to include 'No Loading At Any Time' as per initial recommendation.</p> <p>Remove existing chevron signs/bollards on Harcourt Road to provide 2 x 5.5m sections of time restricted parking (Mon-Fri 8am-6pm 1 hour/no return in 2 hour) and provision of Motorcycle parking.</p>

Section	Description	Initial recommendation	Adjusted recommendation
1	<b>65 to 79 Seabourne Road</b>	<p>Remove existing 9.5m parking bay. Replace with No Waiting At Any Time parking restriction.</p> <p>Existing 5m Loading Bay retained and extended to 11m to improve loading provision for local businesses.</p> <p>Existing limited No Waiting restriction on junction of Seabourne Road / Norwood Place upgraded to No Waiting &amp; No Loading At Any Time to clear junction.</p> <p>New 12m (up to 2 vehicles) section of time restricted parking on Norwood Place.</p> <p>New 18m (up to 3 vehicles) section of time restricted parking on Cromwell Road.</p> <p>Time restricted parking sections: Mon - Fri 8am - 6pm, 1 hour / No return within 2 hours.</p>	<p>Remove existing 9.5m parking bay. Replace with No Waiting At Any Time parking restriction.</p> <p>Existing 5m Loading Bay retained and extended to 11m to improve loading provision for local businesses.</p> <p>Existing limited No Waiting restriction on junction of Seabourne Road / Norwood Place upgraded to No Waiting &amp; No Loading At Any Time to clear junction.</p> <p>New 18m (up to 3 vehicles) section of time restricted parking on Cromwell Road. Time restricted parking: Mon – Fri, 8am - 6pm, 1 hour / No return within 2 hours.</p> <p>Initial recommendation of New 12m (up to 2 vehicles) section of time restricted parking on Norwood Place now removed.</p>
1	<b>83 to 111 Seabourne Road</b>	<p>Reduce 64m parking section by 2m. Replace with 'No Waiting and No Loading At Any Time' restriction extended around the junction of Norwood Place, with the aim of improving visibility of the junction and preventing obstruction of the crossing point for pedestrians.</p> <p>10m of the remaining parking section to be allocated into Loading Bay.</p> <p>Remaining 52m parking section retained with parking restrictions unchanged.</p>	No adjustments to recommendation

Section	Description	Initial recommendation	Adjusted recommendation
2	<b>175 to 182 Seabourne Road</b>	<p>Remove existing 44m parking section. Replace with 'No Waiting At Any Time' Parking Restriction.</p> <p>Addition of time restricted parking sections on adjacent roads. Restriction for all sections: Mon – Fri, 8am – 6pm, 1 hour / No return in 2 hours. Parking sections as follows:</p> <ul style="list-style-type: none"> <li>Hosker Road – 1 x 10m (up to 2 vehicles).</li> <li>Parkwood Road <ul style="list-style-type: none"> <li>3 x 5.5m (1 vehicle)</li> <li>1 x 11m (up to 2 vehicles)</li> <li>1 x 19.5m (up to 4 vehicles)</li> </ul> </li> <li>Woodside Road – 1 x 18m (up to 3 vehicles)</li> </ul> <p>Amendment to existing Taxi bay on Parkwood Road: Loading Only, 8am – 6pm, No Waiting Except Taxis, 6pm – 8am.</p> <p>Provide additional signage to promote Woodside Road Car Park</p> <p>Additional 4 bays + loading bay provided through reconfiguration</p>	<p>Remove existing 44m parking section. Replace with 'No Waiting At Any Time' Parking Restriction.</p> <p>Addition of time restricted parking sections on adjacent roads. Restriction for all sections: Mon – Fri, 8am – 6pm, 1 hour / No return in 2 hours. Parking sections as follows:</p> <ul style="list-style-type: none"> <li>Hosker Road – 1 x 10m (up to 2 vehicles)</li> <li>Parkwood Road <ul style="list-style-type: none"> <li>1 x 5.5m (1 vehicle)</li> <li>1 x 19.5m (up to 4 vehicles)</li> </ul> </li> <li>Woodside Road – 1 x 18m (up to 3 vehicles).</li> </ul> <p>Amendment to existing Taxi bay on Parkwood Road: Loading Only, 8am – 6pm, No Waiting except Taxi, 6pm – 8am.</p> <p>Provide additional signage to promote Woodside Road Car Park</p> <p>Additional 3 bays + loading bay provided through reconfiguration</p> <p>2 x 5.5m parking sections on Parkwood Road now removed.</p>
3	<b>111 to 117 Southbourne Grove</b>	<p>30m Parking section reduced by 4m at Pine Avenue end.</p> <p>Installation of Rediweld kerbs and/or wands in newly created space to prevent vehicle use.</p> <p>Provide public realm improvements at junction of Pine Avenue</p> <p>Provide additional highway signage for Woodside Road Car Park</p>	No adjustments to recommendation

Section	Description	Initial recommendation	Adjusted recommendation
4	<b>2 to 15 Carbery Row</b>	<p>Configuration of parking section amended as follows:</p> <ul style="list-style-type: none"> <li>• Parking bay (A), reduced to 29m to (reduction of 1 vehicle).</li> <li>• Parking bay (B) reduce to 15m, (reduction of 1 vehicle).</li> <li>• Extend bus stop clearway to 27m. Provide accessible boarding kerb ahead of shelter. Investigate feasibility for replacement shelter in improved position.</li> <li>• Parking bay (C), retain existing arrangement</li> </ul> <p>Existing time restrictions unchanged.</p> <p>Raise crossing point concerns with Road Safety team for thoughts and options.</p> <p>Consider removal of disabled parking bay on Irving Road, replace with 11m parking bay.</p>	<p>Configuration of parking section amended as follows:</p> <ul style="list-style-type: none"> <li>• Parking bay (A), reduced to 29m to (reduction of 1 vehicle).</li> <li>• Parking bay (B) reduce to 15m, (reduction of 1 vehicle).</li> <li>• Extend bus stop clearway to 27m. Provide accessible boarding kerb ahead of shelter. Investigate feasibility for replacement shelter in improved position.</li> <li>• Parking bay (C), retain existing arrangement</li> </ul> <p>Existing time restrictions unchanged.</p> <p>Raise crossing point concerns with Road Safety team for thoughts and options.</p> <p>Disabled parking bay on Irving Road retained.</p>